

Cancer Treatment Center

Philadelphia, Pennsylvania

ARCHITECT – Gresham, Smith and Partners, Nashville, TN

CONTRACTOR – Turner Construction Co., Philadelphia, PA

DISTRIBUTOR – TB Philly Inc., Phoenixville, PA

Protective Coatings

Fall – Winter 2005

PROJECT TASK

Update the old exterior, by matching the appearance of the much newer adjacent medical office building.

PROJECT SOLUTION

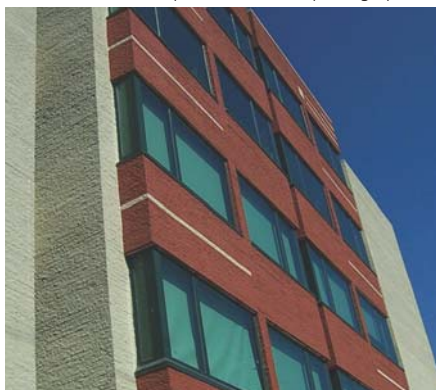
Applied M3P, in two colors, over a coat of Primex.

PRODUCTS

Primex
M3P



Top left and center photographs were taken "before" and the top right and bottom three were taken "after" the work was completed.



PROJECT HISTORY

The original building was formerly known as the Parkview Hospital and is located in Philadelphia, Pennsylvania.

It has now become part of a group of hospitals known as the Cancer Treatment Centers of America.

This Eastern Regional Medical Center is solely focused on providing the most advanced cancer treatment available.

The exterior appearance of the old Parkview Hospital building was an off-white, split-face concrete brick.

It was decided by all parties concerned before the project got underway that the look and feel to the new, renovated building should match the tan and red clay brick of the more modern medical office building adjacent to the Parkview Hospital.

Work began on this project in the Fall of 2005 with a number of field mock-ups tried and tested using both Conpro Lastic and M3P.

After careful consideration by the construction team, a coat of Primex followed by coats of M3P in two different colors were the products of choice. These products were chosen because it was felt that together they provided a more natural, "not painted" appearance. The new center with its clean, refreshing appearance was opened to the public on December 19, 2005.